

PARKSIDE COMMUNITY ASSOCIATION 2018 Summer Arts Camp Parent Packet



Session Dates & Times

Session I: July 10 – 27

Session II: July 30 – August 17

Monday - Friday: 9:00AM – 3:00PM

Location

Delaware Park Tot Lot

(Near the Florence Avenue/Parkside Avenue entrance)

Contact DURING Camp Hours

(716) 420-8125

Our Return to Delaware Park

We have enjoyed a long partnership with the Olmsted Conservancy, with our location in Delaware Park and all the facilities it offers, and are excited to return to the Park once again and take advantage of their wide open spaces and fresh air! Our use of Delaware Park will also mean more outdoor activities for our campers! Please note that, in the event of rain, we will be using **PS 54, the George E. Blackman School of Excellence**. The school is located just steps from the PCA office at 2358 Main Street, and includes a large enclosed playground area for campers, should the weather clear up during our time there.

What is Summer Arts Camp About?

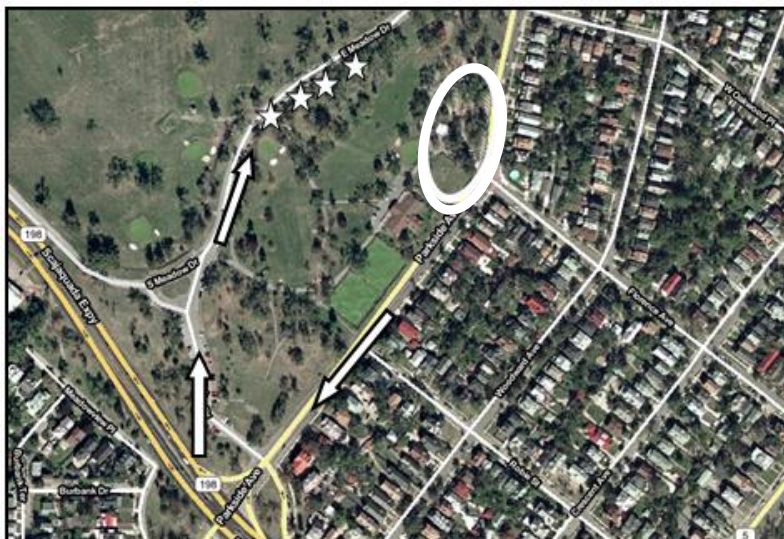
This is a heavily focused arts camp and we strive to give our campers opportunities for them to express themselves in different ways. Campers are encouraged to think outside the box and look at everything from an artistic point of view.

As art is such an important part of our camp structure, we are pleased to once again partner with local teaching artists who will use their art as a tool for learning. For our 2018 program, our campers will be creating alongside local Buffalo teaching artists who work in mediums including: ceramics, paint, metals, mixed media, and design elements.

While this is mainly an arts camp, campers are given the choice to participate in some organized active games. In addition to this, campers have free time to play on the playground, hang out with other campers, kick a soccer ball, and much more! If for some reason a camper is not interested in one of the scheduled activities for the day we recommend you send your camper with a quiet activity for them to do on their own. For camper safety, it is **extremely important** that campers stay with their groups! (Please make sure you stress this to your camper!)

Parking

In order to ensure the safety of everyone and to avoid congestion in the park, we ask that when dropping off and picking up your child you **do not use the Florence/Parkside entrance to the park or park on Parkside Avenue near this entrance (no standing signs are posted in this area)**. Please enter the park at the entrance closest to Humboldt Parkway, and park along Ring Road.



Contact Information

The following number can be reached *during camp hours* (8:00AM to 4:00PM) if you have any questions or concerns.

Parkside Summer Arts Camp line: (716) 420-8125

If you have a question outside of camp hours (6:00AM- 8:00AM/ 4:00PM-10:30PM) please email our PCA Board President, Eric Harvey, at President@parksidebuffalo.org. The PCA office has intermittent hours currently, so messages may not be promptly returned that are left on our office phone line at (716) 838-1240.

Drop-off and Sign-in, Pick-up and Sign-out

Sign in is at 9:00AM and sign out is 3:00PM.

Children must be picked up and dropped off by an individual noted in the child's registration packet, and be holding proper identification. Children will not be release to individuals who cannot meet this requirement.

Sign-in and sign-out books will be located at the Tot Lot in Delaware Park, and in our enclosed Camp area, near the intersection of Parkside and Florence. Only children in the 9-12 age group, who have been granted permission by their guardian in their registration packets, will be allowed to sign themselves out and walk home.

Early drop off / late pick up options:

Regularly scheduled program hours: 9:00AM- 3:00PM

Early drop off: 8:00AM. - 8:45AM

Late pick up*: 3:15PM - 4:00PM

Cost for each additional time slot (early drop off or late pick): \$5 per instance

**Late pick up is only available on non-rain days, when camp is held in Delaware Park.*

Late pick up is not available at the rain location, PS 54, the George E. Blackman School of Excellence.

Early and Late Participants will be given chaperoned free-time. We will not be offering additional programming during these times, but our youth staff will be on hand to supervise campers. Children dropped off earlier than 8:45AM or picked up after 3:15PM will be charged accordingly. Parents interested in utilizing this service should notify the camp at least one day in advance, and payments can be made each Friday.

Rain Site

As there are not adequate indoor areas available at our daily location, the Parkside Summer Arts Camp hosts “rain days” at an alternate location in the community. This year’s location for rain days we will be using **PS 54, the George E. Blackman School of Excellence**. The school is located just steps from the PCA office at 2358 Main Street, and includes a large enclosed playground area for campers, should the weather clear up during our time there.

If we believe that the threat of rain (and lightning) is imminent we will post a “Rain Day” notification on the PCA’s Facebook page by 8:00AM. **Be sure to “like” our Facebook page for these updates and pictures.** We will also send out a mass text message and email alert to ONLY to the email addresses and phone numbers listed on your child’s application for contacting during rain days.

In the event of a Rain Day, there will be no late pickup option for campers, as all campers must be picked up from PS 54 at the 3:00PM dismissal time.

Lunch & Water

Your child will need to bring a lunch each day. Please mark your child’s name clearly on the container. **Please do not send lunches in large backpacks** as refrigeration is unavailable and space is limited. We strongly encourage children to bring a clean, reusable water bottle, labeled with their name. A snack time will also be included if you would like to send your child with an extra snack.

Field Trips

Walking Field Trips to Buffalo Arts Studio in the Tri-Main Building are scheduled for Session One: Thursday, July 26th Session Two: Friday, August 10th

Daily Schedule

2018 Camp Schedule

TIME	11-12YRS	9-10YRS	7-8YRS	5-6YRS
8:00-8:45	Early Play Ground	Play Ground	Play Ground	Play Ground
9:00-9:30	DROP OFF Murals / Drawing	DROP OFF Murals / Drawing	DROP OFF Murals / Drawing	DROP OFF Murals / Drawing
9:30-9:50	Playground	Playground	Playground	Playground
10:00-10:50	VISITING ARTIST	MURAL PROJECT or Counselor led art	ART - Director 2	ART - Director 1
11:00-11:50	ART - Director 1	VISITING ARTIST	LUNCH / GAMES	LUNCH / GAMES
12:00-12:50	LUNCH / GAMES	LUNCH / GAMES	VISITING ARTIST	ART - Director 2
1:00-1:50	ART - Director 2	ART - Director 1	MURAL PROJECT or Counselor led art	VISITING ARTIST
2:00-2:50	MURAL PROJECT or Counselor led art	ART - Director 2	ART - Director 1	MURAL PROJECT or Counselor led art
3:00-3:15	Pick Up	Pick Up	Pick Up	Pick Up
3:15-4:00	Late Free Play/Free Draw	Free Play/Free Draw	Free Play/Free Draw	Free Play/Free Draw

Proper Attire & Personal Property

Children should wear clothes suitable for outdoor play. Shoes should also be appropriate for sports such as softball and basketball (no sandals). Parents of younger children should consider packing an extra set of clothes in case of a bathroom related accident.

Water bottles (clearly marked), hats & sunscreen are also encouraged. Campers are **STRONGLY** discouraged from bringing cell phones, tablets, portable gaming devices, all other electronic devices, and playing cards. **Parkside Summer Arts Camp cannot take responsibility for the loss of such items.**